

# Impact of Land Use/ Land Cover Changes on Ecosystem Service Values in the Cherangany Hills Water Tower, Kenya

Brian Rotich <sup>a, b\*</sup>, Mengistie Kindu<sup>c</sup>, Harison Kipkulei<sup>d</sup>, Stephen Kibet<sup>e</sup>, Dennis Ojwang<sup>f</sup>,  
brotich@chuka.ac.ke

- a. The Hungarian University of Agriculture and Life Sciences, Institute of Environmental Sciences, H-2100, Gödöllő, Hungary.
- b. Faculty of Environmental Studies and Resources Development, Chuka University, P.O Box 109-60400, Chuka Kenya.
- c. Institute of Forest Management, TUM School of Life Sciences Weihenstephan, Technical University of Munich, Hans-Carl-von-Carlowitz-Platz 2, D-85354 Freising, Germany
- d. Leibniz Centre for Agricultural Landscape Research (ZALF) Eberswalder Straße 84, 15374 Müncheberg
- e. Kenya Water Towers Agency, P.O Box 42903-00100 Nairobi, Kenya
- f. Leaf Magnet Research and Development Ltd, P.O Box 34109-00100, Nairobi Kenya

## Highlights

- Cropland, water features, and built-up areas increased whereas forest, grassland, and bareland areas decreased.
- Huge conversions of grasslands and forestlands to croplands negatively affected the provision of ecosystem services.
- An estimated loss of 8.68 million USD in total ESV within the past 37 years in the Cherangani Hills Water Tower.
- Estimates of the individual and total ESV changes are significant for policy formulation and decision making.

**Emails:** Kanyongi.Brian.Rotich@phd.uni-mate.hu; brotich@chuka.ac.ke (B. Rotich); mengistiek@yahoo.com; mengistie@tum.de (M. Kindu); hkipkulei@gmail.com (H. Kipkulei); stvkb@gmail.com (S. Kibet); d.ojwang5@gmail.com (D. Ojwang).

## Abstract

Changes in Land Use/ Land Cover (LULC) due to anthropogenic and natural drivers alter the ecosystem structure and function, resulting in variations of the Ecosystem Service Values (ESVs). This study investigated the impacts of LULC Changes on ESVs over 37 years in the Cherangany Hills Water Tower (CHWT) of Kenya. Landsat images from 1985 and 2022 were used to examine historical land cover changes in the CHWT. Supervised classification was carried out using Random Forest (RF) classifier in R-Studio while ArcGIS desktop software (version 10.8) was used for mapping to evaluate the LULC changes. Accuracy assessments were also conducted for each reference year. The estimation of ESVs was done using the benefit transfer approach, employing modified local value coefficients.

Six LULC types (Forest, Cropland, Grassland, Water features, Bareland, Built-up area) were successfully classified, with overall accuracies of more than 92.5% and Kappa coefficients greater than 0.91. Results showed an expansion in cropland areas by about 36.78% (35,082 hectares [ha])

whereas grassland and forest experienced a reduction of their land areas by 28.26% (-22,181ha) and 13.38% (-10,353ha) respectively between 1985 and 2022. Consequently, there was an increase in the ESV of cropland by 7.91 million United States Dollars (USD) while forest and grassland registered a decrease in their ESVs by 10.22 million USD and 6.50 million USD respectively. Overall, the total ESV of the CHWT declined by 7.16% (-8.68 million USD) from 121.22 million USD in the year 1985 to 112.54 million USD in 2022. As for the individual ESVs, 15 out of the 17 individual ESs registered negative changes in their ESVs. Food production and biological control were the two individual ESs with positive ESV changes over the study period.

There is a need to curb the current drivers of LULC changes within the water tower, especially the expansion of croplands, to stop further ecosystem degradation for optimum delivery of ecosystem services.

**Keywords:** Landsat, Ecosystem Services Valuation, Cherangany Hills, Benefit Transfer Approach, Remote Sensing

## 1.0 Introduction

Ecosystem Service (ES) refers to the aspects of ecosystems utilized either actively or passively for human well-being (Fisher and Turner, 2008; Millennium Ecosystem Assessment [MEA], 2005). These benefits can be categorized into direct benefits (regulating, provisioning, and cultural services), which affect the well-being of humans in the short term, and indirect benefits (supporting services), which are critical in sustaining the production of the other services; hence affects human well-being in the long run (Costanza et al., 1997; de Groot et al., 2012).

Ecosystem Services (ESs) are crucial for sustaining life on earth and preserving the ecosystem's integrity (The Economics of Ecosystems and Biodiversity [TEEB], 2010). Despite their significance, ESs are threatened by socio-economic and biophysical pressures such as expanding human settlements, expanding agriculture, population growth, urbanization, and accessibility to markets (Kindu et al., 2016; Li et al., 2007). Unprecedented Land Use/ Land Cover (LULC) changes in different parts of the world due to human and natural activities have had adverse impacts on biological diversity and ecosystems, affecting their ability to provide ecosystem services (Costanza et al., 1997; Gashaw et al., 2018; Hernández-Blanco et al., 2020). As a result, such changes have been identified as one of the leading drivers of ESs loss both globally and locally.

Globally, research has been carried out to understand, value, model, and manage ESs (Badamfirooz et al., 2021; Cabral et al., 2016; Costanza et al., 2014, 1997; de Groot et al., 2012; Gashaw et al., 2018; Hasan et al., 2020; Jha et al., 2020; Kindu et al., 2016; Marques et al., 2021; Niquisse et al., 2017; Sannigrahi et al., 2020; Sharma et al., 2019; Shiferaw et al., 2019; Talukdar et al., 2020; Tolessa et al., 2017). Ecosystem Services Valuation (ESV) entails estimating the marginal value of ecosystem services which determines the benefit of preserving or the cost of losing a given amount or quality of ecosystem service (Pearce, 1998). The valuation of ESs, therefore, provides an essential tool for creating awareness and influencing policy and decision making. It provides an easily understandable measure of the true value of ecosystem services to prioritize the conservation of ecosystems and biodiversity (Qin et al., 2019; Thellmann et al.,

2019). There are different valuation methods of ecosystem services which can be broadly divided into two categories: a) the primary valuation methods, which follow economic approaches involving market prices, production approaches, travel cost, opportunity cost, the hedonic method, conjoint analysis, and replacement cost; and b) The land use proxy-based method, which utilizes the benefit transfer approach by applying the existing Ecosystem Service Values (ESVs) data from one region to a new region which has little or no data (de Groot et al., 2012; Farber et al., 2006; Kindu et al., 2016; Richardson et al., 2015). Several studies have been done in Kenya to estimate the economic values of ecosystems (Langat et al., 2021; Ministry of Environment and Forestry, 2019; Nature Kenya, 2019; Okumu and Muchapondwa, 2017).

The Cherangany Hills Water Tower (CHWT) is among the five major water towers (Mt. Kenya, Mt. Elgon, Cherangany Hills, The Aberdare range, and The Mau Forest complex) of the 18 gazetted water towers in Kenya. It makes significant contribution to the national economy by providing numerous environmental, economic, social, and cultural benefits (Kenya Water Towers Agency, 2020). While efforts have been made towards studying the impact of LULC changes on ESs globally, no such studies have been carried out in the CHWT of Kenya. The objectives of this study, therefore, are to 1). Analyze LULC changes in the CHWT from 1985-2022 using Remote Sensing (RS) and Geographical Information System (GIS) 2). To find out the overall changes in ESVs in response to the LULC changes in the CHWT and 3). To estimate the impact of LULC dynamics on individual ESVs in the CHWT. Our research findings will provide a better understanding of the status and dynamics of ecosystem services in the CHWT for future land use planning and natural resource management by the relevant stakeholders.

## **2.0 Materials and Methods**

### **2.1 Study Area**

The CHWT is geographically located between 35°.00' to 35°.83' E and 0°.50' to 1°.50' N spanning four administrative counties of Elgeyo-Marakwet, West Pokot, Trans-Nzoia, and Uasin Gishu (Fig.1). The water tower covers an area of 263,771ha (2,637.71km<sup>2</sup>), which comprises 97,397ha of gazetted forest and 166,374ha of 5 kilometers (km) buffer zone around the gazetted forest (Kenya Water Towers Agency, 2020). The gazetted forest is made up of 14 forest blocks, mainly comprised of indigenous forests with a few continuous forest plantations (Kenya Forest Service, 2015).

The water tower has an altitude range of 2,000m to 3,365m above sea level at Cheptoket peak. The area receives bi-modal rainfall, with long rains occurring from April to June and short rains from July to October. The average yearly rainfall in the water tower ranges from 800 mm in the north to about 1,500 mm in the west, with cool and humid weather conditions. Temperatures range from 14 °C to 30 °C, with July being the coldest month and January the hottest (Kenya Forest Service, 2015). CHWT is a vital watershed area for lake Turkana and Victoria basins as it hosts critical headwaters for rivers Turkwel, Nzoia, and Kerio that drain into the two lakes (Kenya Forest Service, 2015). Cambisols form the major soil group in the water tower, characterized by good drainage, good structure, varied acidity, and high organic matter (OM) content (Kenya Water Towers Agency, 2020).

The water tower is rich in biodiversity, with about 1,296 vascular plant species from 130 families and 608 genera spread across the forest blocks, including 17 endemic species. This flora represents 54.17%, 43.83%, and 18.50% of the Kenyan plant families, genera, and species, respectively (Mbuni et al., 2019). The water tower is home to many faunas, including buffaloes (*Syncerus caffer*), elephants (*Loxodonta africana*), leopards (*Panthera pardus*), black and white Colobus monkeys (*Colobus guereza*), the rare swamp-dwelling sitatunga antelope (*Tragelaphus spekii*), and the near-threatened mountain bongo antelope (*Tragelaphus eurycerus*) (Kenya Forest Service, 2015; Kenya Forestry Research Institute, 2017a). It has attractive recreation sites such as Kipkobo caves, Kiptaberr mountain, Mtelo campsite, and Muyein waterfalls (Ministry of Environment and Forestry, 2019). Communities living within the water tower include the Cherang'any/Sengwer, Marakwet, Pokot, and Luhya, whose livelihoods are supported by economic activities like farming, wage labor, beekeeping, and small businesses (Mbuni et al., 2020; Rotich, 2019).

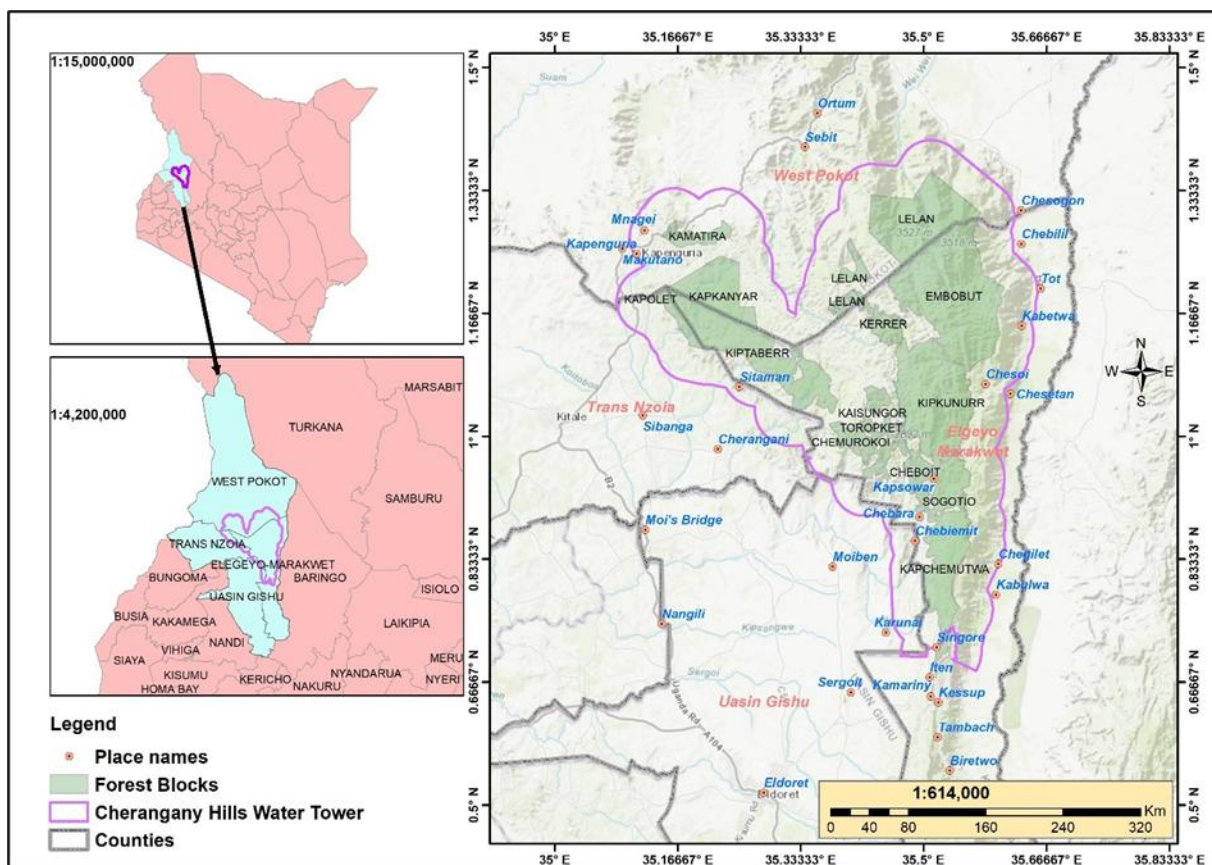


Fig. 1: Map of Cherangany Hills Water Tower, Kenya

## 2.2 Data collection, image processing, and classification

Satellite imageries and ancillary data were used to examine the historical land cover changes in the study area over 37 years, from 1985 to 2022. The year 1985 was chosen as the baseline for the change detection analysis because it was the year with the best available quality satellite image data close to 1964, the year when Cherangany forest was gazetted as a forest reserve (Kenya Forest Service, 2015), and 2022 was the most recent year for comparison. A subset of Landsat satellite

imageries was downloaded from the United States Geological Survey (USGS) website (<https://earthexplorer.usgs.gov/>) using Google Earth Engine (GEE) script. Inbuilt in the script were radiometric, geometric correction, cloud masking, and filling using available same season imagery using Landsat quality assessment band, image subsetting, and mosaicking of the images. For the best comparison of the acquired satellite data for the two time periods, images captured during the dry season were used, which fell on 0 to 90 Julian days (January to March). For 1985 Landsat 4-5 Thematic Mapper (TM) was selected while Landsat 8-9 Operational Land Imager (OLI) and Thermal Infrared Sensor (TIRS) was used for 2022, both at 30m spatial resolution. Images were sourced for path/row 169/059 and 169/059, respectively, covering the CHWT fully. To address the challenge of clouds on the imageries, this study used the clouds score algorithm in GEE to mask pixels that had high clouds cover based on Landsat quality image file. The algorithm scores clouds on an image in the value range of 0 to 100 and for this study, a threshold value of 20 was used to mask the cloudy pixel. The masked clouds were replaced with pixels of images in the Landsat archive acquired within the defined 0-90 days Julian period.

Pixel-based supervised classification was executed using Random Forest (RF) classifier in R-Studio using the packages; snow, maptools, sf, randomforest, raster, rgdal and lwgeom. The advantage of using RF over maximum likelihood is the ability to limit overfitting without substantially increasing error due to bias. Running RF in R-Studio is faster, easy to integrate validation data, and generates a confusion matrix within the model (Shelestov et al., 2017). Visual interpretation of high resolution (<1.5m) Google Earth images, as well as the use of secondary data, guided digitization of polygons used as training sites for the LULC classes defined using the Intergovernmental Panel on Climate Change (IPCC) classification scheme as shown in Table 2. In total, 1500 pixels were collected for 1985 and 1700 pixels for 2022 as training samples. The training samples were determined using a user-defined number of pixels based on the proportion of the polygons per landcover class as provided in Table 1. The samples were then used to train the classifier using the stratified random sampling method. The validation samples were interpreted visually on the composite Landsat images and Google Earth high-resolution images.

Table 1: The number of training samples for LULC classification

LULC types	1985		2022	
	Polygons	Training Pixels	Polygons	Training Pixels
Forest	16	400	22	400
Cropland	19	400	43	400
Grassland	31	200	34	200
Water features	4	200	3	400
Bareland	5	200	22	200
Built-up area	2	100	5	100
<b>Total</b>	<b>77</b>	<b>1500</b>	<b>129</b>	<b>1700</b>

To determine the accuracy of the landcover classification, random stratified sample of an equal number of pixels (as provided for the training pixels in Table 1) was applied in each stratum (landcover class) and a confusion matrix was generated. The metrics used to assess the accuracy were Kappa coefficient, user and producer error matrices. Six LULC types were identified and

used for classification. The classes comprised cropland, forest, grassland, bareland, built-up area, and water features as described in Table 2.

Table 2: Land use and land cover classification scheme in the CHWT

LULC types	Description
Forest	Land dominated by trees (>5m in height), with crown cover greater than 10%
Cropland	Tilled land and land under cultivation of crops
Grassland	Areas with temporary or permanent grass cover
Water features	Watercourses including rivers, streams, wetlands, and dams
Bareland	Areas without vegetation covered by rocks, rough roads, or degraded lands
Built-up area	Land dominated by houses, huts, paved roads, and industrial Facilities

The data processing workflow is shown in Fig. 2.

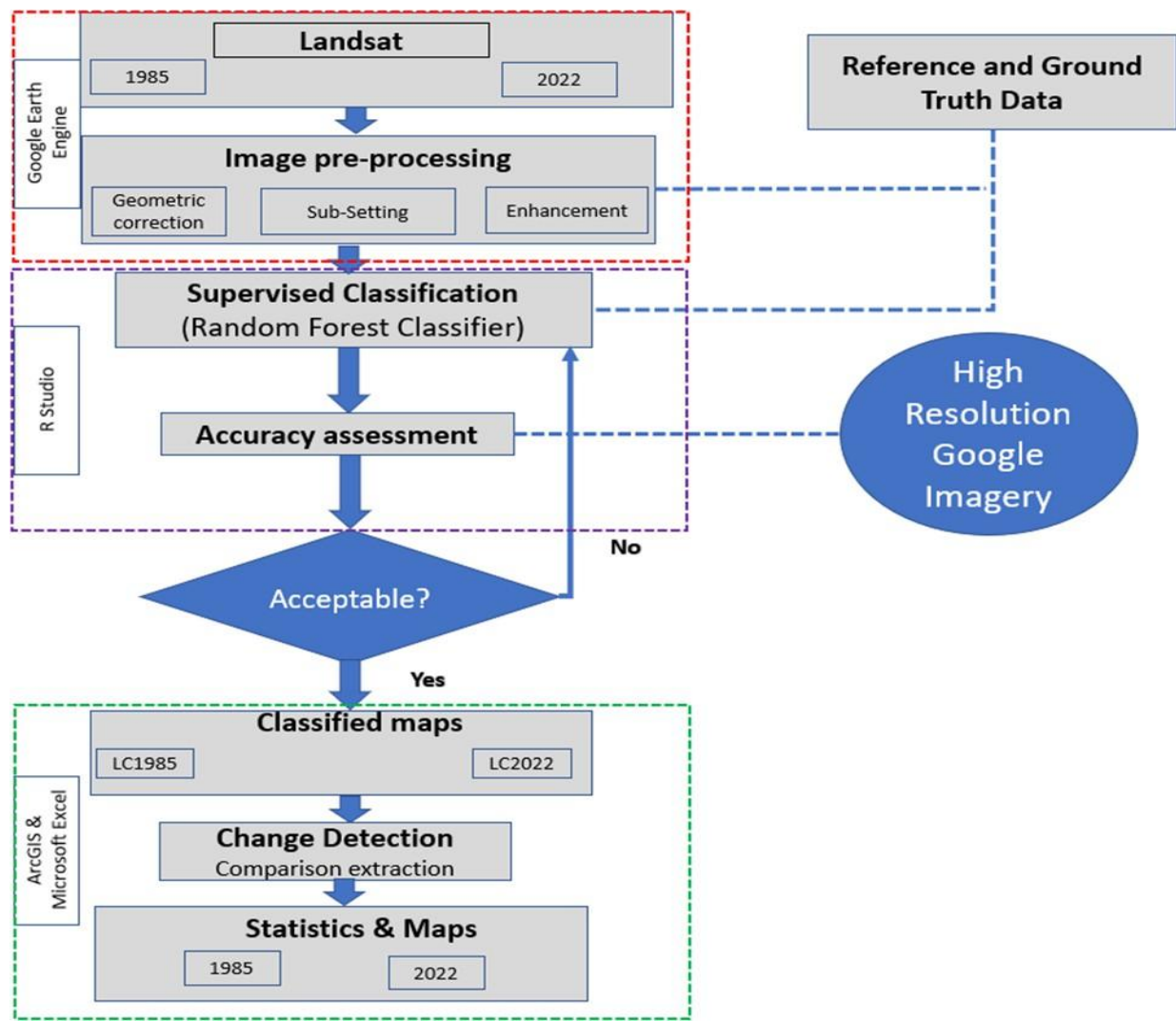


Fig. 2: Data processing workflow

### 2.3 Ecosystem Services Value estimation

This study used the benefit transfer approach to estimate the study area's ecosystem service values due to the lack of local-level data (Costanza et al., 1997; Richardson et al., 2015; Rosenberger and Loomis, 2003). Numerous studies have used a similar approach through the benefit transfer method, which refers to the process of utilizing existing values from an original research to estimate the ESVs of other similar locations in the absence of site-specific valuation data (Gashaw et al., 2018; Kindu et al., 2016; Rai et al., 2018; Sharma et al., 2019; Talukdar et al., 2020; Temesgen et al., 2018; Tolessa et al., 2017). Modified local value coefficients developed for 11 biomes by Kindu et al. (2016) were adopted for this study to determine ESV due to the unavailability of historical data for our study area and the high cost of ground data collection. Furthermore, our study area is within the same geographic location (East Africa), with similar climatic and topographic conditions as Kindu et al. (2016).

Six LULC classes from our study were identified then compared with their corresponding equivalent biomes (Table 3), where the most representative biomes were used as a proxy for each LULC type, including 1) Tropical Forest for Forest, 2) Cropland for Cropland, 3) Grassland for Grassland, 4) Urban for Built-up area 5) Water for Water features and 6) Bareland for Bareland.

Table 3: Six LULC types in the study area, their equivalent biomes, and ecosystem service coefficients based on the modified estimates (Kindu et al., 2016).

LULC type	Equivalent biome	Ecosystem service Coefficient (USDha <sup>-1</sup> year <sup>-1</sup> )
Forest	Tropical Forest	986.69
Cropland	Cropland	225.56
Grassland	Grassland	293.25
Water features	Water	8103.5
Bareland	Bareland	0
Built-up area	Urban	0

Similarly, modified conservative annual value coefficients for ecosystem service functions of each LULC type by Kindu et al. (2016) were used for this study (Table 4). These values were modified from Costanza et al. (1997) using expert knowledge of the Ethiopian highlands landscape conditions and those based on the TEEB valuation database (Van der Ploeg et al., 2010).

Table 4. Ecosystem service functions and their adopted modified value coefficients (USD ha<sup>-1</sup> year<sup>-1</sup>) for each of the six LULC types (Kindu et al., 2016)

Ecosystem services	Biome					
	Tropical Forest	Cropland	Grassland	Water	Bareland	Urban
<b>Provisioning services</b>						
Water supply	8			2117		
Food production	32	187.56	117.45	41		
Raw material	51.24					

Genetic resources	41					
<b>Regulating services</b>						
Water regulation	6		3	5445		
Water treatment	136		87	431.5		
Erosion control	245		29			
Climate regulation	223					
Biological control		24	23			
Gas regulation	13.68		7			
Disturbance regulation	5					
<b>Supporting services</b>						
Nutrient cycling	184.4					
Pollination	7.27	14	25			
Soil formation	10		1			
Habitat/refugia	17.3					
<b>Cultural services</b>						
Recreation	4.8		0.8	69		
Cultural	2					
<b>Total</b>	<b>986.69</b>	<b>225.56</b>	<b>293.25</b>	<b>8103.5</b>	<b>0</b>	<b>0</b>

The LULC data for each reference year was prepared, and their corresponding area in hectares was calculated in a GIS environment. The value coefficients were then assigned to each LULC type based on the values of the modified coefficients (Table 3). We calculated ESVs and changes using equations derived from the model proposed by Costanza et al. (1997) and further modified by Gashaw et al. (2018) and Kindu et al. (2016). The total ESV for each LULC type was obtained by multiplying the area of each LULC type with its corresponding value coefficient. The values for the LULC type for each year were then summed up to estimate the total ESV of the water tower for each year, as shown in equation 1.

$$ESV = \sum (A_k \times VC_k) \quad (\text{Equation 1})$$

where  $ESV$  = total estimated ecosystem service value,  $A_k$  = the area (ha) and  $VC_k$  = the value coefficient ( $USD\ ha^{-1}\ year^{-1}$ ) for LULC type 'k'.

The values of services provided by individual ecosystem functions within the study area were also estimated using equation 2.

$$ESV_f = \sum (A_k \times VC_{fk}) \quad (\text{Equation 2})$$

Where  $ESV_f$  = calculated ecosystem service value of function 'f',  $A_k$  = the area (ha) and  $VC_{fk}$  = value coefficient of function 'f' ( $USD\ ha^{-1}\ year^{-1}$ ) for LULC type 'k'.



The changes of ESV over time were calculated in United States Dollars (USD) and percentages from the difference between the estimated values in each reference year and presented in a table (Table 8). The percentage changes in ESV were calculated by comparing the values of the last and first years, as shown in equation 3.

$$\text{Percentage ESV change} = \left( \frac{\text{ESV final year} - \text{ESV initial year}}{\text{ESV initial year}} \right) \times 100 \quad (\text{Equation 3})$$

### 3. 0 Results

#### 3.1 LULC Classification Accuracy

The overall classification accuracy, Kappa coefficient, user and producer error matrices for different LULC classes for 1985 and 2022 were calculated and presented in 5 a and 5b, respectively. The LULC map from 1985 had an overall classification accuracy of 97.6% with a corresponding Kappa coefficient of 0.97, whereas the LULC map for the year 2022 had an overall accuracy of 92.5% with a Kappa coefficient of 0.91.

Table 5a. Accuracy assessment for the year 1985

Classified Data	Reference data							User accuracy
	Forest	Cropland	Grassland	Water	Bareland	Built-up	Total	
Forest	<b>394</b>	4	1	1	0	0	400	0.99
Cropland	3	<b>386</b>	7	0	4	0	400	0.97
Grassland	1	8	<b>188</b>	0	2	1	200	0.94
Water	0	0	1	<b>199</b>	0	0	200	1.00
Bareland	0	0	3	0	<b>197</b>	0	200	0.99
Built-up	0	0	0	0	0	<b>100</b>	100	1.00
Total	398	398	200	200	203	101	<b>1500</b>	
Producer accuracy (%)	0.99	0.97	0.94	1.00	0.97	0.84		

Overall accuracy = 97.6%, Kappa Coefficient = 0.97

Table 5b. Accuracy assessment for the year 2022

Classified Data	Reference data							User accuracy
	Forest	Cropland	Grassland	Water	Bareland	Built-up	Total	
Forest	<b>384</b>	4	11	1	0	0	400	0.96
Cropland	7	<b>353</b>	24	0	16	0	400	0.88
Grassland	19	25	<b>153</b>	0	2	1	200	0.77
Water	0	0	0	<b>400</b>	0	0	400	1.00
Bareland	0	10	0	0	<b>190</b>	0	200	0.95
Built-up	0	4	0	0	4	<b>92</b>	100	0.92
Total	410	396	188	401	212	93	<b>1700</b>	
Producer accuracy (%)	0.94	0.89	0.81	1.00	0.90	0.84		

Overall accuracy = 92.5%, Kappa Coefficient = 0.91

### 3.2 LULC Spatial Distribution Patterns

The six LULC types in CHWT from 1985 and 2022 were mapped, and their spatial distribution patterns displayed (Fig. 3). In 1985, cropland represented the dominant LULC type, covering about 36.16% of the total land area in the water tower. The areas under grassland and forest were equally significant, as they covered 29.76% and 29.34% of the study area, respectively. In contrast, the remaining LULC types (built-up areas, water features, and bareland) made up only 4.74% of the total land area of the water tower (Table 6). By 2022 there were variations in the spatial distribution patterns as the proportion of cropland had increased to 49.46%. Forest and grassland covered lesser areas (25.42%) and (21.35%), respectively, while the combined area covered by water features, built-up, and bareland was a meagre (3.76%).

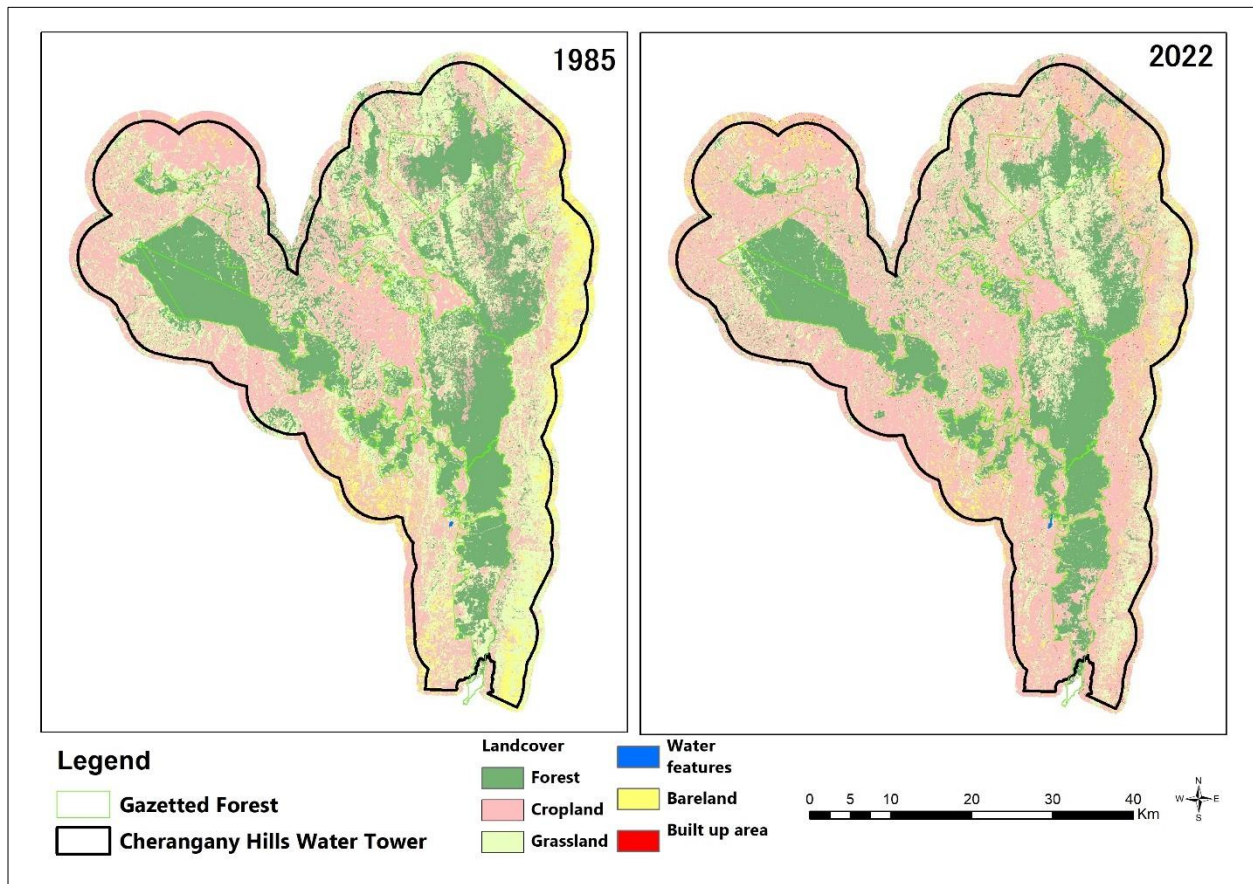


Fig. 3: LULC maps of the CHWT from 1985 and 2022

### 3.3 Land Use Land Cover Changes

Between 1985 and 2022, areas under cropland, water features, and built-up zones increased, whereas forest, grassland, and bareland areas diminished. Croplands expanded the most by 35,081.9ha, while grassland (-22,181.3ha) and forest (-10,353.4ha) experienced a significant reduction in their total land area (Table 6). Built-up areas showed the highest expansion percentage (202%). However, this high percentage increase of the built-up class does not mean houses and roads covered a large land area, but it is instead the relative proportion of increment of the type

observed over the 37 years. As for the mean annual area gains and losses rates, cropland areas had the highest average yearly expansion at approximately 948.16 ha/year, while grassland reduced the most annually by around 600 ha/year. Water features exhibited the least positive mean annual change rate at 0.42 ha/year, while bareland decreased the least annually by 79.97ha/year.

Table 6. LULC classification results and area changes from 1985 and 2022 in CHWT

LULC type	1985		2022		Area change (1985-2022)		
	Area (ha)	(%)	Area (ha)	(%)	Ha	%	Annual change rate (ha)
Forest	77,400.4	29.34	67,047	25.42	-10,353.4	-13.38	-279.82
Cropland	95,392	36.16	130,473.9	49.46	35,081.9	36.78	948.16
Grassland	78,488.8	29.76	56,307.5	21.35	-22,181.3	-28.26	-599.49
Water features	39.2	0.01	54.9	0.02	15.7	40.05	0.42
Bareland	12,254.3	4.65	9,295.4	3.52	-2,958.9	-24.15	-79.97
Built-up area	196.4	0.08	592.4	0.22	396	201.63	10.70
<b>Total</b>	<b>263,771.1</b>	<b>100</b>	<b>263,771.1</b>	<b>100</b>			

### 3.4 LULC Transitions

Over the 37 years, there were several conversions from one LULC type to another in CHWT. The respective LULC transitions in the study area are presented in Table 7.

Table 7: Transition matrix showing LULC changes (ha) in the water tower between 1985 and 2022

		2022						
	LULC type	Forest	Cropland	Grassland	Water features	Bareland	Built-up areas	Grand Total
1985	Forest	<b>55,944.1</b>	9,539.0	11,793.4	10.8	100.8	12.3	<b>77,400.4</b>
	Cropland	3,469.6	<b>72,135</b>	13,557.5	2.6	5,872.2	355.1	<b>95,392</b>
	Grassland	7,593.9	41,836.3	<b>27,713.7</b>	13.9	1,177	154	<b>78,488.8</b>
	Water features	9.9	1.1	0.7	<b>27.5</b>	0	0	<b>39.2</b>
	Bareland	29.1	6,837.5	3,221.1	0.1	<b>2,104.3</b>	62.2	<b>12,254.3</b>
	Built-up areas	0.4	125.0	21.1	0	41.1	<b>8.8</b>	<b>196.4</b>
	<b>Grand Total</b>	<b>67,047</b>	<b>130,473.9</b>	<b>56,307.5</b>	<b>54.9</b>	<b>9,295.4</b>	<b>592.4</b>	<b>263,771.1</b>

A considerable chunk of the forestland was converted to grassland (11,793.4ha) and cropland (9,539ha), respectively. Around 53% (41,836.3ha) of the grassland and 56% (6,837.5ha) of the bareland were also converted to cropland in the CHWT over the study period. Therefore, it is evident that the highest share of conversions within the grassland, bareland, and forest classes in the water tower was towards croplands. Overall, in the 37 years of this study, approximately 13% of the total landmass in the CHWT was converted to cropland. This shows that key transitions in the CHWT are mainly attributed to agricultural activities.

A detailed analysis of the spatial pattern of these transitions shows that forestland in the southern mid-high slopes of Chebiemit, Kaptum, and Kendur locations exhibited vast conversions to croplands. A similar observation was made in forested areas on low to mid slopes around Yemit and Kabtabuk locations.

### 3.5 Estimation of Ecosystem Services Values and Changes

The estimated total ESV and percentages from 1985 and 2022 for each LULC type were calculated and summarized in Table 8. Negative values depict a decrease in ESV while positive values indicate an increase in ESV (Li et al., 2007; Ligate et al., 2018).

Table 8: Ecosystem Service Values (Million USD) and percentages for each LULC type in 1985 and 2022 in the CHWT

LULC type	1985		2022		1985-2022	
	ESV	%	ESV	%	ESV change	% Change
Forest	76.37	63.00	66.15	58.78	-10.22	-13.38
Cropland	21.52	17.75	29.43	26.15	7.91	36.78
Grassland	23.01	18.99	16.51	14.67	-6.50	-28.26
Water features	0.32	0.26	0.45	0.40	0.13	40.05
Bareland	0	0	0	0	0	0
Built-up area	0	0	0	0	0	0
<b>Total</b>	<b>121.22</b>	<b>100</b>	<b>112.54</b>	<b>100</b>	<b>-8.68</b>	<b>-7.16</b>

The total ESV of the water tower was estimated at 121.22 million USD for 1985 and 112.54 million USD for 2022. This signifies an overall decline in the total ecosystem value by 8.68 million USD (-7.16%). As for the individual LULC types, the forest had the greatest contribution to the total ESV in 1985 at 63% (76.37 million USD), followed by grassland, which made up 18.99% of the total ESV (23.01 million USD), cropland made 17.75% of the total ESV (21.52 million USD), and water features had the least contribution of 0.26% (0.32 million USD). In 2022, forest accounted for 58.78% of total ESV (66.15 million USD), cropland 26.15% (29.43 million USD), and grassland 14.67% (16.51 million USD), with water features accounting for the smallest percentage of the total ESV at 0.40% (0.45 million USD). According to Costanza et al. (1997), built-up area and bare land do not provide any ecosystem services hence the nil valuation for these biomes for our study area. Over the 37 years, there were notable changes in the areas of individual LULC types, which contributed to changes in their ESV and an overall change in the total ESV of the water tower. Forest and grassland registered losses in their ecosystem values by 10.22 million USD (-13.38%) and 6.50 million USD (-28.26%), respectively. On the other hand, there were gains in the ESV for cropland by 7.91 million USD (36.78%) and 0.13 million USD (40.05%) for water features. Fig. 4 visualizes ESV changes for the different LULC types between 1985 and 2022 in the CHWT.

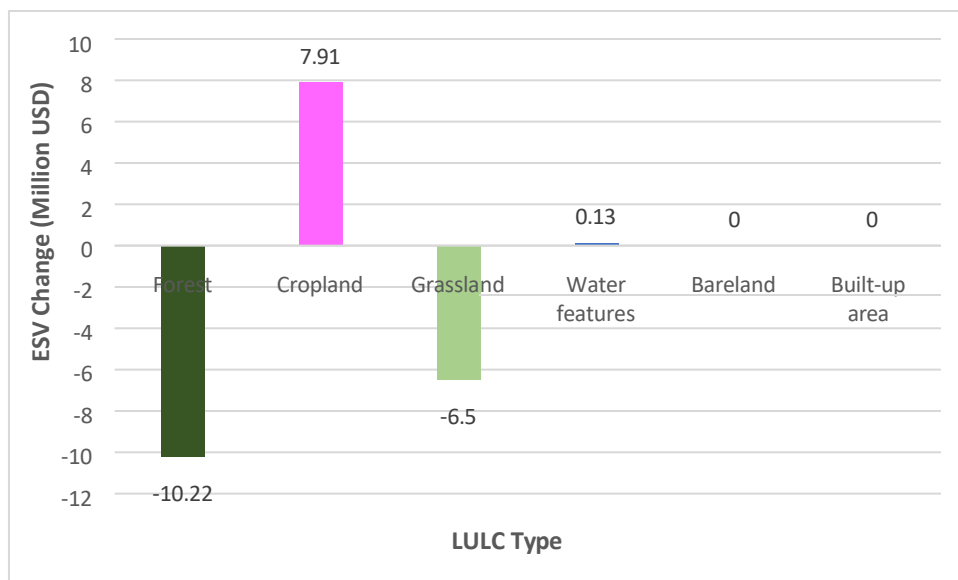


Fig. 4. Changes in ESVs (Million USD) for each LULC type between 1985 and 2022

The annual individual ecosystem services for the two reference years and their respective changes were also estimated, and their values summarized (Table 9).

Table 9: The estimated annual value and changes of individual ecosystem services (ESV in million USD per year)

	<b>Ecosystem services</b>	<b>ESV 1985</b>	<b>ESV 2022</b>	<b>Change</b>	<b>% Change</b>
<b>1</b>	<b>Provisioning services</b>				
	Water supply	0.70	0.65	-0.05	-7.14
	Food production	29.59	33.23	3.64	12.30
	Raw material	3.97	3.44	-0.53	-13.35
	Genetic resources	3.17	2.75	-0.42	-13.25
	<b>Sub total<sub>1</sub></b>	<b>37.43</b>	<b>40.07</b>	<b>2.64</b>	<b>7.05</b>
<b>2</b>	<b>Regulating services</b>				
	Water regulation	0.91	0.87	-0.04	-4.40
	Water treatment	17.37	14.04	-3.33	-19.17
	Erosion control	21.24	18.06	-3.18	-14.97
	Climate regulation	17.26	14.95	-2.31	-13.38
	Biological control	4.09	4.43	0.34	8.31
	Gas regulation	1.61	1.31	-0.30	-18.63
	Disturbance regulation	0.39	0.34	-0.05	-12.82
	<b>Sub total<sub>2</sub></b>	<b>62.88</b>	<b>54.00</b>	<b>-8.88</b>	<b>-14.12</b>
<b>3</b>	<b>Supporting services</b>				
	Nutrient cycling	14.27	12.36	-1.91	-13.38
	Pollination	3.86	3.72	-0.14	-3.63
	Soil formation	0.85	0.73	-0.12	-14.12
	Habitat/refugia	1.34	1.16	-0.18	-13.43
	<b>Sub total<sub>3</sub></b>	<b>20.32</b>	<b>17.97</b>	<b>-2.35</b>	<b>-11.56</b>
<b>4</b>	<b>Cultural services</b>				

	Recreation	0.44	0.37	-0.07	-15.91
	Cultural	0.15	0.13	-0.02	-13.33
	<i>Sub total<sub>4</sub></i>	<b>0.59</b>	<b>0.5</b>	<b>-0.09</b>	<b>-15.25</b>
	<b>Total</b>	<b>121.22</b>	<b>112.54</b>	<b>-8.68</b>	

Regulating services were the dominant ESs offered by the water tower, followed by provisioning services, supporting services, and cultural services in that order for both years (Fig. 5). The top three contributors to the total ESV of the 17 individual ecosystem services in the study area for the year 1985 included food production (29.59 million USD/year), erosion control (21.24 million USD/year), and water treatment (17.37 million USD/year). In 2022, food production (33.23 million USD/year) was the top-ranking individual ES from the tower, followed by erosion control (18.06 million USD/year) and climate regulation (14.95 million USD/year). Regarding individual ES changes, 15 of the 17 ESs registered negative changes in their ecosystem values between the two years, with water treatment (-3.33 million USD/year) and erosion control (-3.18 million USD/year) diminishing the most. The two ES with positive changes in ESV included food production (3.64 million USD/year) and biological control (0.34 million USD/year). Generally, there were losses in regulating services (-14.12%), supporting services (-11.56%), and cultural services (-15.25%), while provisioning services increased by 7.05% between 1985 and 2022 (Table 9).

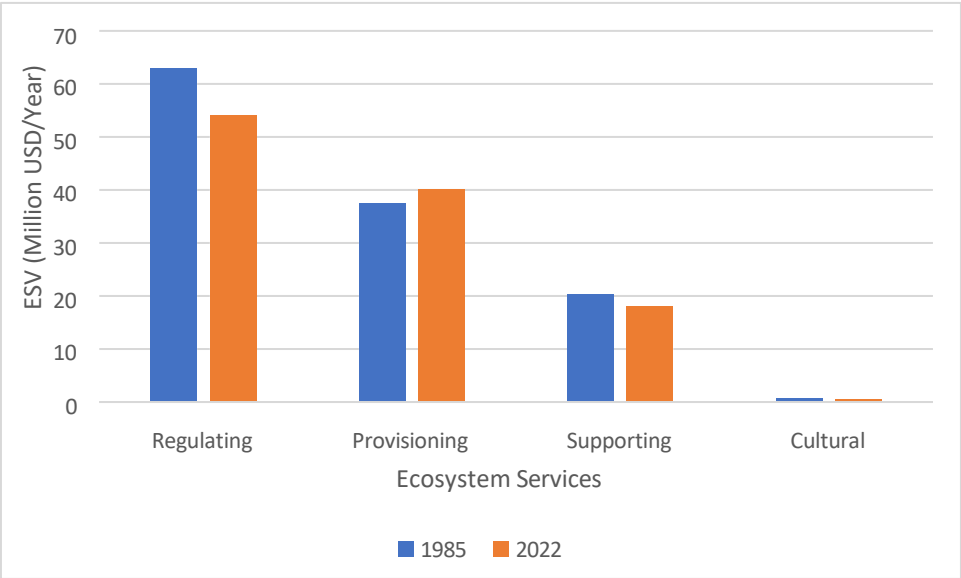


Fig. 5. Bar chart showing the four categories of individual ecosystem services (1985 and 2022)

## **4.0 Discussion**

### **4.1 LULC Classification and Accuracies**

In this study, a detailed evaluation of the impacts of LULC dynamics on ESVs was undertaken for the first time in the CHWT of Kenya. The spatial distribution of six LULC types over the two reference years (1985 and 2022) was also extracted. The overall classification accuracies obtained for this study was more than 92.5%, whereas the Kappa coefficients showed a strong agreement for each of the six classified images. These results are within the acceptable range, hence we proceeded and used the classification output for the estimation of the ESVs of the different LULC classes (Kindu et al., 2013; Landis and Koch, 1977).

### **4.2 Land Use Land Cover changes**

The CHWT underwent several LULC changes over the study period, with a notable increase in areas under cropland, built-up areas, and water features while forest, grassland, and bareland classes decreased. Our findings are in tandem with that of the Kenya Water Towers Agency. (2020) which showed a contraction of forest and grassland and a subsequent increase in croplands over 29 years from 1990 to 2019 in the study area. The loss of forest cover is principally due to its conversion to grassland and cropland. Other direct and indirect drivers of forest cover loss in the water tower are; encroachment, livestock grazing, illegal logging, charcoal production, firewood harvesting, excisions, forest fires, and climate change (Rotich and Ojwang, 2021). Similar forest cover loss trends have also been observed in the other prominent water towers of Kenya, including the Mau forest complex (Jebiwott et al., 2021; Ongong and Sweta, 2014), Mount Elgon (Masayi et al., 2021; Mugagga et al., 2012) Mount Kenya (Willkomm et al., 2016) and Aberdare ranges (Akotsi et al., 2006). According to Brink and Eva. (2009), the Sub-Saharan African region lost 16% of its forests and 5% of its open woodlands and bushlands between 1975 and 2000, while agricultural land increased by 55%. Most of the grassland areas within the water tower were also converted to cropland at an alarming average annual rate of about 600 ha/year. The grasslands mostly occupy the buffer zones around the forest; thus, their proximity to the forest and the fertile nature of the soils within the grasslands make them prone to conversion to cropland for food production (Kenya Forestry Research Institute, 2017b). The vast and rapid (948.16ha/year) expansion of cropland can be linked to population growth in the water tower, which leads to a demand for more land for food production to meet the population's needs. Rotich and Ojwang. (2021) report a 78.4% rise in the human population in the study area in just three decades from 1989 to 2019. This is affirmed by the upsurge in built-up areas (201.63%) observed in the water tower over the 37 years (Table 6). These findings corroborate with that by Odawa and Seo. (2019) in the Mau water tower of Kenya, over a 29-year study period (1986 - 2015). They found out that population growth resulted in massive land cover changes in the water tower, as farmers living around the 5 km forest buffer zone expanded their agricultural lands through their dynamic and extensive agricultural activities. A historical land cover change analysis in East Africa from 1998 to 2017 also showed a 34.8% increase in the area under cropland at the expense of natural habitats (open forests, open grasslands, and wooded grasslands), resulting in a large-scale reduction of the woody vegetation classes (Bullock et al., 2021). A study in the Northeast China by Wang et al. (2015), further revealed an expansion of croplands at the expense of grassland and marginal

forests. This expansion was linked to population growth and accompanying food requirements which caused land degradation and the decline of ecosystem services. All the above studies underline the adverse impacts of cropland expansion on natural habitats.

Land use conversions in CHWT have resulted in the loss of grassland and forest, which play a critical role in carbon sequestration. If the trend continues, it could further exacerbate climate change and its associated impacts in the study area. Mwangi et al. (2020) report a rise in temperature by 0.3°C to 0.5°C per decade in the water tower from the year 1981 to 2010 with a projected rise of between 3.0°C to 3.5°C by the year 2050. This might have detrimental implications on the vast flora and fauna found within the CHWT and the capacity of the water tower to provide ecosystem services. Our analysis revealed that conversions of grassland and bareland to croplands mainly occurred in the mid slopes on the eastern and southwestern parts of the water tower. This information is helpful to the authorities as it can help guide conservation and restoration initiatives and mitigate further unsustainable LULC changes in CHWT in the future.

The increase in water features in the CHWT can be ascribed to the construction of a dam (Chebara dam) within the water tower in the year 1997 to supply water to Eldoret town. The dam supplies about 24,000 cubic meters (m<sup>3</sup>) of water daily to Eldoret town (Kenya Water Towers Agency, 2020).

#### **4.3 Changes in the Total Ecosystem Service Values**

LULC change has been recognized as a key driver in altering ecosystems and their services (Kindu et al., 2016; Lin et al., 2018; Muleta et al., 2021). Different development priorities and management options can substantially impact the land cover and ecosystem services (Hernández-Blanco et al., 2020). Significant changes in land cover in the CHWT were the decrease in forest and grassland, with a consequent increase in cropland. Overall, there was a 7.16% reduction in the total ESV in the water tower from an estimated value of 121.22 million USD in 1985 to 112.54 million USD in 2022. This loss can be attributed to the substantial decrease in the ESVs of forest and grassland proportionate to their respective LULC losses over the study period. The coefficients of the ecological value of forest are relatively high (986.69 USDha<sup>-1</sup> year<sup>-1</sup>) compared to the other land classes (Table 3), only second to water features; thus, the reduction in the forest cover over the 37 years negatively impacted the total ESV. Our results are in line with the findings of other researchers from different parts of the world, including Ethiopia (Alebachew et al., 2022; Gashaw et al., 2018; Shiferaw et al., 2021), China (Wang et al., 2015), Tanzania (Msofe et al., 2020) Nigeria (Olushola et al., 2018) who report significant negative contribution of forest losses to the total ESV. In contrast, other studies have found that areas with increased forestlands and grasslands over time have higher total ecosystem service values (Camacho-Valdez et al., 2014; Wang et al., 2014). These findings, therefore, underscore the crucial role of forests in determining the total ecosystem service value of a given ecosystem.

Despite the vast expansion of cropland (36.78%) in the study area between the two years, its low coefficient equivalent value per unit area meant its ESV could not offset the deficit created due to forest and grassland ESV losses. The small area covered by water features in comparison to the



other LULC types also meant that its contribution to the total ESV was marginal despite its enormous coefficient equivalent value.

#### **4.4 Changes in individual Ecosystem Services Values**

Regulating services were the dominant ESs in the water tower, followed by provisioning services, supporting services, and cultural services, respectively, for both study years. These findings are comparable to a similar study conducted in the water tower in terms of the relative contributions of the four categories to the total ESV (Langat, et al., 2021). Regulating services had the most outstanding contribution to the total ESV at 73%, provisioning contributed 23%, supporting 3%, while cultural made up 1% of the total ESVs (Langat, et al., 2021). Three out of the four main categories of the individual ecosystem services (regulating services, supporting services, and cultural services) experienced a reduction in their ESVs while provisioning services ESV increased between 1985 and 2022. The gain in the provisioning services ESV was primarily contributed to by increased food production due to cropland expansion. Similar positive contributions of increased croplands on provisioning services have been reported by other researchers (Mengist et al., 2022; Tolessa et al., 2021). Tolessa et al. (2021) lament that a continued increase in provisioning services at the expense of regulating and supporting services is unsustainable as it hampers the future flow of these two essential ESs; therefore, protection of regulating and supporting services is necessary in such cases.

For the individual ESs, 15 out of the 17 ESs registered negative changes in their ecosystem values between 1985 and 2022. The positive changes in the ESV for food production and biological control were due to the increase in the area under cropland in the study area over the two reference years. Likewise, a study conducted in central Ethiopia reported a historical and predicted increase in biological control and food production ESVs while the remaining 15 ESVs decreased throughout the study periods (Biratu et al., 2022). The regulating ESVs of the water tower was the most diminished after the LULC changes, specifically water treatment, erosion control, and climate regulation. This can be primarily attributed to the loss of forest and grassland cover in the water tower, chiefly from conversions to cropland. These two land cover types are vital for offering the aforementioned regulating services. These results are validated by the findings of a study conducted by Nadir et al. (2019) to assess the status of water quality in rivers originating from the water tower. High pollution levels were discovered in the rivers, notably high levels of iron, nitrates, chromium, Total Suspended Solids (TSS), copper, Chemical Oxygen Demand (COD), and Biological Oxygen Demand (BOD) exceeding the accepted limits in the environment (Nadir et al., 2019). The Ministry of Environment and Forestry. (2020) further reports that poor farming practices within the study area have led to increased soil erosion, thus impacting the state of the soil and rivers.

Pollination was the least affected individual ESV by the LULC changes (-3.63%), thereby signifying the capacity of the water tower to offer pollination services, which is a critical ecological survival function. The forest acts as a habitat for natural and insect pollinators, which are instrumental for crop production in the water tower.

#### **4.5 Limitations of the study**

Our study employed the benefit transfer method, which works on the assumption that values are constant across the types of ecosystems in comparison. In reality, however, most ecosystems are diverse, with variations in the service beneficiary populations (Sharma et al., 2019). Tolessa et al. (2017), however, note that the estimation of ESVs using LULC and established ecosystem service value coefficients is useful in regions where there is a scarcity of data on historical land uses and ground data collection is expensive as it provides robust information and alternatives for landscape-level decision making.

Secondly, we did not use the Coefficient of Sensitivity (CS) analysis method to account for the uncertainty of the represented biomes, as employed in many other similar studies (Akber et al., 2018; Kindu et al., 2016; Muleta et al., 2021; Tolessa et al., 2017). This is due to the inability of the CS method to address the reliability of the ESV estimation (Aschonitis et al., 2016). A simplistic calculus used in CS analysis returns CS values that are always between 0 and 1, leading to the conclusion that the applied coefficients by the users are always robust. Moreover, the CS values of ecosystem services are always independent of the percentage change of the ES coefficient defined by the user (Aschonitis et al., 2016). Several studies have also been conducted to estimate ESVs changes in response to LULC changes without incorporating the CS analysis (Gashaw et al., 2018; Msofe et al., 2020; Sharma et al., 2019). Therefore, there is a need to come up with a more reliable method that takes into account the uncertainty of the model and the biomes it represents.

#### **5.0 Conclusion**

This study used Landsat images and conservative ES valuation data from Kindu et al. (2016), from a similar geographical setting rather than relying on the global values from Costanza et al. (1997), which could otherwise overestimate the economic values of the ecosystem services in the CHWT. Between 1985 and 2022, areas under cropland, water features, and built-up zones increased, whereas forest, grassland, and bareland regions diminished in the water tower. Within the same period, there was a resultant negative change (-8.68) in the total ESV of the water tower from 121.22 million USD to 112.54 million USD. Out of the 17 individual ESs in the water tower, 15 registered losses in their ecosystem values, with only two (food production and biological control) recording gains in their ESV.

Our findings provide evidence that expansion of agriculture and subsequent losses in forest and grassland cover can drive LULC changes and associated losses of ESVs elsewhere globally, with similar socio-economic and environmental conditions as our study area. There is a need to curb the current drivers of LULC changes within the water tower to stop further degradation of the ecosystem and its corresponding values for optimum delivery of ecosystem services. Advocating for active community participation in the management of forest resources and enforcement of relevant agrarian and land laws and policies can help check further anthropogenic intrusions into the water tower. Restoration efforts for the degraded areas should also be scaled up. Our findings, therefore, pave the way for future research efforts and the advancement of robust value

coefficients for better estimation of ecosystem values of the natural resources within the study area and in other regions of Kenya.

## **Funding**

This research did not receive any specific grant from funding agencies in the public, commercial, or not-for-profit sectors. Open access publishing funding was provided by the Hungarian University of Agriculture and Life Sciences (MATE) under the agreement between the Hungarian consortium EISZ and Elsevier.

## **Declaration of competing interests**

The authors declare that they have no competing interests

## **CRedit authorship contribution statement**

**Brian Rotich:** Conceptualization, Writing - original draft, Writing - review & editing

**Mengistie Kindu:** Methodology, Writing - review & editing

**Harison Kipkulei:** Writing - original draft, Writing - review & editing

**Stephen Kibet:** Formal analysis, Methodology

**Dennis Ojwang:** Writing - review & editing

## **Acknowledgments**

Our gratitude goes to the anonymous reviewers for their valuable comments and suggestions.

## **References**

- Akber, M.A., Khan, M.W.R., Islam, M.A., Rahman, M.M., Rahman, M.R., 2018. Impact of land use change on ecosystem services of southwest coastal Bangladesh. *J. Land Use Sci.* 13, 238–250. <https://doi.org/10.1080/1747423X.2018.1529832>
- Akotsi, E.F.N., Ndirangu, J.K., Gachanja, M., 2006. Changes in Forest Cover ub Kenya’s Five “Water Towers” 2003-2005 45.
- Alebachew, M., Sewnet, A., Haregeweyn, N., 2022. Trees , Forests and People Assessing the impacts of land use / cover changes on ecosystem service values in Rib watershed , Upper Blue Nile Basin , Ethiopia. *Trees, For. People* 7, 100212. <https://doi.org/10.1016/j.tfp.2022.100212>
- Aschonitis, V.G., Gaglio, M., Castaldelli, G., Fano, E.A., 2016. Criticism on elasticity-sensitivity coefficient for assessing the robustness and sensitivity of ecosystem services values. *Ecosyst. Serv.* 20, 66–68. <https://doi.org/10.1016/j.ecoser.2016.07.004>
- Badamfirooz, J., Mousazadeh, R., Sarkheil, H., 2021. A proposed framework for economic valuation and assessment of damages cost to national wetlands ecosystem services using the benefit-transfer approach. *Environ. Challenges* 5, 100303.

<https://doi.org/10.1016/j.envc.2021.100303>

- Biratu, A.A., Bedadi, B., Gebrehiwot, S.G., Melesse, A.M., Nebi, T.H., Abera, W., Tamene, L., Egeru, A., 2022. Ecosystem Service Valuation along Landscape Transformation in Central Ethiopia.
- Brink, A.B., Eva, H.D., 2009. Monitoring 25 years of land cover change dynamics in Africa: A sample based remote sensing approach. *Appl. Geogr.* 29, 501–512.  
<https://doi.org/10.1016/j.apgeog.2008.10.004>
- Bullock, E.L., Healey, S.P., Yang, Z., Oduor, P., Gorelick, N., Omondi, S., Ouko, E., Cohen, W.B., 2021. Three decades of land cover change in East Africa. *Land* 10, 1–15.  
<https://doi.org/10.3390/land10020150>
- Cabral, P., Feger, C., Levrel, H., Chambolle, M., Basque, D., 2016. Assessing the impact of land-cover changes on ecosystem services: A first step toward integrative planning in Bordeaux, France. *Ecosyst. Serv.* 22, 318–327. <https://doi.org/10.1016/j.ecoser.2016.08.005>
- Costanza, R., D'Arge, R., De Groot, R., Farber, S., Grasso, M., Hannon, B., Limburg, K., Naeem, S., O'Neill, R. V., Paruelo, J., Raskin, R.G., Sutton, P., Van Den Belt, M., 1997. The value of the world's ecosystem services and natural capital. *Nature* 387, 253–260.  
<https://doi.org/10.1038/387253a0>
- Costanza, R., de Groot, R., Sutton, P., van der Ploeg, S., Anderson, S.J., Kubiszewski, I., Farber, S., Turner, R.K., 2014. Changes in the global value of ecosystem services. *Glob. Environ. Chang.* 26, 152–158. <https://doi.org/10.1016/j.gloenvcha.2014.04.002>
- de Groot, R., Brander, L., van der Ploeg, S., Costanza, R., Bernard, F., Braat, L., Christie, M., Crossman, N., Ghermandi, A., Hein, L., Hussain, S., Kumar, P., McVittie, A., Portela, R., Rodriguez, L.C., ten Brink, P., van Beukering, P., 2012. Global estimates of the value of ecosystems and their services in monetary units. *Ecosyst. Serv.* 1, 50–61.  
<https://doi.org/10.1016/j.ecoser.2012.07.005>
- Farber, S., Costanza, R., Childers, D.L., Erickson, J., Gross, K., Grove, M., Hopkinson, C.S., Kahn, J., Pincetl, S., Troy, A., Warren, P., Wilson, M., 2006. Linking ecology and economics for ecosystem management. *Bioscience* 56, 121–133.  
[https://doi.org/10.1641/0006-3568\(2006\)056\[0121:LEAEFE\]2.0.CO;2](https://doi.org/10.1641/0006-3568(2006)056[0121:LEAEFE]2.0.CO;2)
- Fisher, B., Kerry Turner, R., 2008. Ecosystem services: Classification for valuation. *Biol. Conserv.* 141, 1167–1169. <https://doi.org/10.1016/j.biocon.2008.02.019>
- Gashaw, T., Tulu, T., Argaw, M., Worqlul, A.W., Tolessa, T., Kindu, M., 2018. Estimating the impacts of land use/land cover changes on Ecosystem Service Values: The case of the Andassa watershed in the Upper Blue Nile basin of Ethiopia. *Ecosyst. Serv.* 31, 219–228.  
<https://doi.org/10.1016/j.ecoser.2018.05.001>
- Hasan, S.S., Zhen, L., Miah, M.G., Ahamed, T., Samie, A., 2020. Impact of land use change on ecosystem services: A review. *Environ. Dev.* 34, 100527.  
<https://doi.org/10.1016/j.envdev.2020.100527>
- Hernández-Blanco, M., Costanza, R., Anderson, S., Kubiszewski, I., Sutton, P., 2020. Future scenarios for the value of ecosystem services in Latin America and the Caribbean to 2050.

- Curr. Res. Environ. Sustain. 2, 100008. <https://doi.org/10.1016/j.crsust.2020.100008>
- Jebiwott, A., Ogendi, G.M., Agbeja, B.O., Alo, A.A., Kibet, R., 2021. Mapping the trends of forest cover change and associated drivers in Mau Forest, Kenya. *Remote Sens. Appl. Soc. Environ.* 23, 100586. <https://doi.org/10.1016/j.rsase.2021.100586>
- Jha, S.K., Negi, A.K., Alatalo, J.M., 2020. Quantification of ecosystem services providing socio-economic benefits to customary owners of natural resources in Pauri, western Himalaya. *Curr. Res. Environ. Sustain.* 4, 100121. <https://doi.org/10.1016/j.crsust.2021.100121>
- Kenya Forest Service, 2015. Cherangani Hills Forest Strategic Ecosystem Management Plan 2015–2040.
- Kenya Forestry Research Institute, 2017a. LAND TENURE PROFILES IN ‘HOTSPOTS’ AND VULNERABLE AREAS ON PUBLIC AND COMMUNITY LANDS IN MT. ELGON AND CHERANGANY HILLS ECOSYSTEMS.
- Kenya Forestry Research Institute, 2017b. Kenya ’ s Water Towers Protection and Climate Change Mitigation and Adaptation ( WaTER ) Programme 2 ND INTERIM NARRATIVE REPORT Component 4 : Science to Inform Design of Community-Level Actions and Policy Decisions.
- Kenya Water Towers Agency, 2020. Kenya Water Towers Status Report for Cherangany Hills.
- Kindu, M., Schneider, T., Teketay, D., Knoke, T., 2016. Changes of ecosystem service values in response to land use/land cover dynamics in Munessa-Shashemene landscape of the Ethiopian highlands. *Sci. Total Environ.* 547, 137–147. <https://doi.org/10.1016/j.scitotenv.2015.12.127>
- Kindu, M., Schneider, T., Teketay, D., Knoke, T., 2013. Land Use / Land Cover Change Analysis Using Object-Based Classification Approach in Munessa-Shashemene Landscape of. *Remote Sens.* 2411–2435. <https://doi.org/10.3390/rs5052411>
- Landis, J.R., Koch, G.G., 1977. The Measurement of Observer Agreement for Categorical Data Data for Categorical of Observer Agreement The Measurement. *Biometrics* 33, 159–174. <https://doi.org/https://doi.org/10.2307/2529310>
- Langat, D., Cheboiwo, J., Okoth, S., Kiprop, J., Kisiwa, A., Guzha, A., Smith, N., DeMeo, T., Kagombe, J., Gatama, S., Kerkering, J. & Doud, B., 2021. THE VALUE OF FOREST ECOSYSTEM SERVICES OF MAU COMPLEX , CHERANGANY AND MT . ELGON , KENYA. *East African Agric. For. Journal*, 84(1).
- Li, R.Q., Dong, M., Cui, J.Y., Zhang, L.L., Cui, Q.G., He, W.M., 2007. Quantification of the impact of land-use changes on ecosystem services: A case study in Pingbian County, China. *Environ. Monit. Assess.* 128, 503–510. <https://doi.org/10.1007/s10661-006-9344-0>
- Ligate, E.J., Chen, C., Wu, C., 2018. Evaluation of tropical coastal land cover and land use changes and their impacts on ecosystem service values. *Ecosyst. Heal. Sustain.* 4, 188–204. <https://doi.org/10.1080/20964129.2018.1512839>
- Lin, X., Xu, M., Cao, C., Singh, R.P., Chen, W., Ju, H., 2018. Land-use/land-cover changes and their influence on the ecosystem in Chengdu City, China during the period of 1992-2018.

Sustain. 10, 1–20. <https://doi.org/10.3390/su10103580>

- Marques, M., Rodrigues, M., Fernandes, D.M., Ruiz, J., Aparecido, E., Matricardi, T., Herculano, A., Lima, D.S., Neponuceno, R., Filho, D.A., Rodrigues, R., Filho, G., Casimiro, V., Oliveira, T., Piscocya, F., Cunha, M., 2021. Land use and land cover changes and carbon stock valuation in the São Francisco river basin , Brazil. *Environ. Challenges* 5, 100247. <https://doi.org/10.1016/j.envc.2021.100247>
- Masayi, N.N., Omondi, P., Tsingalia, M., 2021. Assessment of land use and land cover changes in Kenya’s Mt. Elgon forest ecosystem. *Afr. J. Ecol.* 1–16. <https://doi.org/10.1111/aje.12886>
- Mbuni, Y.M., Wang, S., Mwangi, B.N., Mbari, N.J., Musili, P.M., Walter, N.O., Hu, G., Zhou, Y., Wang, Q., 2020. Medicinal plants and their traditional uses in local communities around cherangani hills, western Kenya. *Plants* 9. <https://doi.org/10.3390/plants9030331>
- Mbuni, Y.M., Zhou, Y., Wang, S., Ngumbau, V.M., Musili, P.M., Mutie, F.M., Njoroge, B., Kirika, P.M., Mwachala, G., Vivian, K., Rono, P.C., Hu, G., Wang, Q., 2019. An annotated checklist of vascular plants of Cherangani hills, Western Kenya. *PhytoKeys* 120, 1–90. <https://doi.org/10.3897/phytokeys.120.30274>
- Mengist, W., Soromessa, T., Legese, G., 2022. Environmental and Sustainability Indicators Estimating the total ecosystem services value of Eastern Afromontane Biodiversity Hotspots in response to landscape dynamics. *Environ. Sustain. Indic.* 14, 100178. <https://doi.org/10.1016/j.indic.2022.100178>
- Millennium Ecosystem Assessment, 2005. *Ecosystems and Human Well-being: Synthesis*, Island Press, Washington, DC. Island Press, Washington, DC. [https://doi.org/10.5822/978-1-61091-484-0\\_1](https://doi.org/10.5822/978-1-61091-484-0_1)
- Ministry of Environment and Forestry, 2020. INTEGRATED MASTER PLAN FOR RESTORATION AND REHABILITATION OF ELGEYO-CHERANGANY HILLS ECOSYSTEM.
- Ministry of Environment, Forestry, 2019. Economic Value of the Mau Forest Complex, Cherangany Hills and Mt. Elgon Water Towers in Kenya.
- Msofe, N.K., Sheng, L., Li, Z., Lyimo, J., 2020. Impact of land use/cover change on ecosystem service values in the Kilombero valley floodplain, southeastern Tanzania. *Forests* 11, 1–17. <https://doi.org/10.3390/f11010109>
- Mugagga, F., Kakembo, V., Buyinza, M., 2012. Land use changes on the slopes of Mount Elgon and the implications for the occurrence of landslides. *Catena* 90, 39–46. <https://doi.org/10.1016/j.catena.2011.11.004>
- Muleta, T.T., Kidane, M., Bezie, A., 2021. The effect of land use/land cover change on ecosystem services values of Jibat forest landscape, Ethiopia. *GeoJournal* 86, 2209–2225. <https://doi.org/10.1007/s10708-020-10186-4>
- Mwangi, K.K., Musili, A.M., Otieno, V.A., Endris, H.S., Sabiiti, G., Hassan, M.A., Tsehayu, A.T., Guleid, A., Atheru, Z., Guzha, A.C., Meo, T. De, Smith, N., 2020. Vulnerability of Kenya ’ s Water Towers to Future Climate Change : An Assessment to Inform Decision

- Making in Watershed Management. *Am. J. Clim. Chang.* 2020, 9, 317-353 317–353.  
<https://doi.org/10.4236/ajcc.2020.93020>
- Nature Kenya, 2019. Ecosystem Service Assessment for the Restoration of Mount Kenya Forest. Nature Kenya. Nairobi.
- Niquisse, S., Cabral, P., Rodrigues, Â., Augusto, G., 2017. Ecosystem services and biodiversity trends in Mozambique as a consequence of land cover change. *Int. J. Biodivers. Sci. Ecosyst. Serv. Manag.* 13, 297–311. <https://doi.org/10.1080/21513732.2017.1349836>
- Odawa, S., Seo, Y., 2019. Water tower ecosystems under the influence of land cover change and population growth: Focus on mau water tower in Kenya. *Sustain.* 11.  
<https://doi.org/10.3390/su11133524>
- Okumu, B., Muchapondwa, E., 2017. Economic valuation of forest ecosystem services in Kenya: implication for design of PES schemes and participatory forest management. ID - 20173341613. *Work. Pap. - Econ. Res. South. Africa* 35 pp.
- Olushola, A., Deng, X., Abiodun, O., Elijah, A., 2018. Assessing changes in the value of ecosystem services in response to land-use / land-cover dynamics in Nigeria. *Sci. Total Environ.* 636, 597–609. <https://doi.org/10.1016/j.scitotenv.2018.04.277>
- Ongong, I., Sweta, L., 2014. Land Cover and Land Use Mapping and Change Detection of Mau Complex in Kenya Using Geospatial Technology. *Int. J. Sci. Res.* 3, 767–778.
- Pearce, D., 1998. Auditing the Earth: The Value of the World’s Ecosystem Services and Natural Capital. *Environment* 40, 23–28. <https://doi.org/10.1080/00139159809605092>
- Qin, K., Li, J., Liu, J., Yan, L., Huang, H., 2019. Setting conservation priorities based on ecosystem services - A case study of the Guanzhong-Tianshui Economic Region. *Sci. Total Environ.* 650, 3062–3074. <https://doi.org/10.1016/j.scitotenv.2018.09.305>
- Rai, R., Zhang, Y., Paudel, B., Acharya, B.K., Basnet, L., 2018. Land use and land cover dynamics and assessing the ecosystem service values in the trans-boundary Gandaki River Basin, Central Himalayas. *Sustain.* 10, 1–22. <https://doi.org/10.3390/su10093052>
- Richardson, L., Loomis, J., Kroeger, T., Casey, F., 2015. The role of benefit transfer in ecosystem service valuation. *Ecol. Econ.* 115, 51–58.  
<https://doi.org/10.1016/j.ecolecon.2014.02.018>
- Rosenberger, R.S., Loomis, J.B., 2003. Benefit Transfer In: Champ, P.A., Boyle, K.J., Brown, T.C. (Eds.), *A Primer on Nonmarket Valuation*. Kluwer Academic Publishers, Boston, Boston, pp. 395–444. [https://doi.org/10.1007/978-94-007-0826-6\\_12](https://doi.org/10.1007/978-94-007-0826-6_12)
- Rotich, B., 2019. Forest Conservation and Utilization in Embobut, Cherangani Hills, Kenya. *Int. J. Nat. Resour. Ecol. Manag.* 4, 7. <https://doi.org/10.11648/j.ijnrem.20190401.12>
- Rotich, B., Ojwang, D., 2021. Trends and drivers of forest cover change in the Cherangany hills forest ecosystem, western Kenya. *Glob. Ecol. Conserv.* 30, e01755.  
<https://doi.org/10.1016/j.gecco.2021.e01755>
- Sannigrahi, S., Chakraborti, S., Banerjee, A., Rahmat, S., 2020. Environmental and

- Sustainability Indicators Ecosystem service valuation of a natural reserve region for sustainable management of natural resources. *Environ. Sustain. Indic.* 5, 100014. <https://doi.org/10.1016/j.indic.2019.100014>
- Sharma, R., Rimal, B., Baral, H., Nehren, U., Paudyal, K., Sharma, S., Rijal, S., Ranpal, S., Acharya, R.P., Alenazy, A.A., Kandel, P., 2019. Impact of land cover change on ecosystem services in a tropical forested landscape. *Resources* 8, 1–13. <https://doi.org/10.3390/resources8010018>
- Shelestov, A., Lavreniuk, M., Kussul, N., Novikov, A., Skakun, S., 2017. Exploring Google earth engine platform for big data processing: Classification of multi-temporal satellite imagery for crop mapping. *Front. Earth Sci.* 5, 1–10. <https://doi.org/10.3389/feart.2017.00017>
- Shiferaw, H., Alamirew, T., Kassawmar, T., Zeleke, G., 2021. Evaluating ecosystems services values due to land use transformation in the Gojeb watershed, Southwest Ethiopia. *Environ. Syst. Res.* 10. <https://doi.org/10.1186/s40068-021-00227-3>
- Shiferaw, H., Bewket, W., Alamirew, T., Zeleke, G., Teketay, D., Bekele, K., Schaffner, U., Eckert, S., 2019. Implications of land use/land cover dynamics and *Prosopis* invasion on ecosystem service values in Afar Region, Ethiopia. *Sci. Total Environ.* 675, 354–366. <https://doi.org/10.1016/j.scitotenv.2019.04.220>
- Stanley Nadir, Victor Jaoko, Phesto Osano, Paul Ongugo, 2019. Status of Water Quality in Mt. Elgon, Cherangany Forested Ecosystems and entire River Nzoia Catchment in Kenya, *Journal of Environmental Science and Engineering B.* <https://doi.org/10.17265/2162-5263/2019.02.001>
- Talukdar, S., Singha, P., Shahfahad, Mahato, S., Praveen, B., Rahman, A., 2020. Dynamics of ecosystem services (ESs) in response to land use land cover (LU/LC) changes in the lower Gangetic plain of India. *Ecol. Indic.* 112, 106121. <https://doi.org/10.1016/j.ecolind.2020.106121>
- TEEB, 2010. *The Economics of Ecosystems and Biodiversity: Mainstreaming the Economics of Nature: A synthesis of the approach, conclusions and recommendations of TEEB.*
- Temesgen, H., Wu, W., Shi, X., Yirsaw, E., 2018. Variation in Ecosystem Service Values in an Agroforestry Dominated Landscape in Ethiopia : Implications for Land Use and Conservation Policy. *Sustain.* 1–20. <https://doi.org/10.3390/su10041126>
- Thellmann, K., Golbon, R., Cotter, M., Cadisch, G., Asch, F., 2019. Assessing hydrological ecosystem services in a rubber-dominated watershed under scenarios of land use and climate change. *Forests* 10, 1–18. <https://doi.org/10.3390/f10020176>
- Tolessa, T., Kidane, M., Bezie, A., 2021. Heliyon Assessment of the linkages between ecosystem service provision and land use / land cover change in Fincha watershed , North-Western Ethiopia. *Heliyon* 7, e07673. <https://doi.org/10.1016/j.heliyon.2021.e07673>
- Tolessa, T., Senbeta, F., Kidane, M., 2017. The impact of land use/land cover change on ecosystem services in the central highlands of Ethiopia. *Ecosyst. Serv.* 23, 47–54. <https://doi.org/10.1016/j.ecoser.2016.11.010>



- Van der Ploeg, De Groot, W., 2010. The TEEB Valuation Database : overview of structure , data and results The TEEB Valuation Database : overview of structure , data and results. Wageningen, the Netherlands.: Foundation for Sustainable Development.
- Vera Camacho-Valdez, Arturo Ruiz-Luna, Andrea Ghermandi, C.A.B.-R.& P.A.L.D.N., 2014. Effects of Land Use Changes on the Ecosystem Service Values of Coastal Wetlands. *Environ. Manage.* 54, 852–864.
- Wang, M., Su, Y., Yang, X., 2014. Spatial distribution of soil organic carbon and its influencing factors in desert grasslands of the hexi corridor, Northwest China. *PLoS One* 9, 24–26. <https://doi.org/10.1371/journal.pone.0094652>
- Wang, Zhiliang, Wang, Zongming, Zhang, B., Lu, C., Ren, C., 2015. Impact of land use / land cover changes on ecosystem services in the Nenjiang River Basin , Northeast China. *Ecol. Process.* <https://doi.org/10.1186/s13717-015-0036-y>
- Willkomm, M., Vierneisel, B., Dannenberg, P., 2016. Land use change dynamics in the Mt. Kenya region-a remotely sensed analysis using RapidEye satellite images. *Zbl. Geol. Paläont. Tl. I, Jg. 2016, H. 1*, 23–40. <https://doi.org/10.1127/zgpI/2016/0023-0040>