

CHUKA



UNIVERSITY

UNIVERSITY EXAMINATIONS

**EXAMINATION FOR THE AWARD OF DEGREE OF MASTER OF SCIENCE,
MASTER OF ARTS AND MASTER OF MED**

COSC 801: COMPUTER USE AND APPLICATION IN RESEARCH

STREAMS:SB/PART TIME

TIME:3 HOURS

DAY/DATE: FRIDAY 6/12/2019

8.30 A.M – 11.30 A.M

INSTRUCTIONS:

1. Answer question **ONE** and any other **TWO** questions from Section B
2. Marks are awarded for clear and concise answers

SECTION A-COMPULSORY

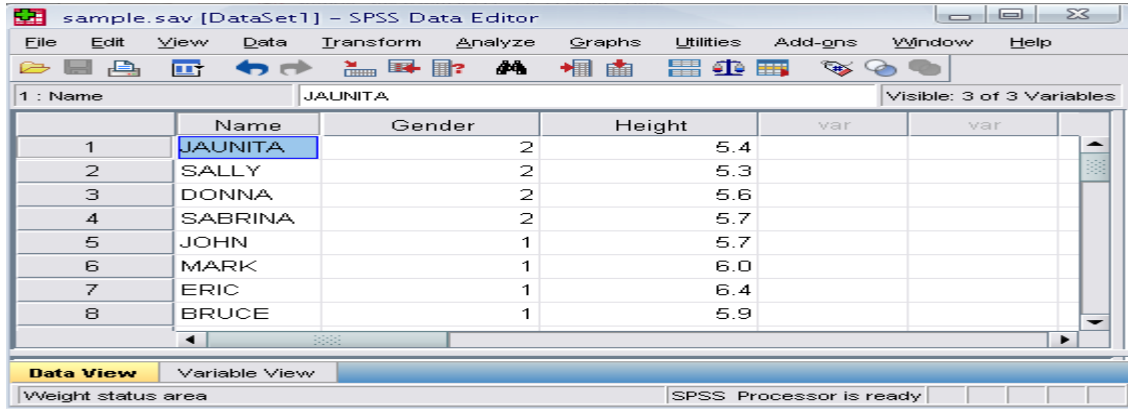
QUESTION ONE [30 MARKS]

- (a) Briefly discuss **FIVE** characteristics of a good PowerPoint presentation [5 marks]
- (b) Give **FIVE** features of Microsoft excel applications that are of interest to a researcher [5 marks]
- (c) While explaining what a word processor is, describe why word processing applications are important to institutions of learning [5 marks]
- (d) You are required to download a **PDF** document from the internet
- (i) What is a PDF document. [2 marks]
 - (ii) What programme is required to be installed in your computer so as to open the PDF document [3 marks]
 - (iii) Why do you think research papers are stored in PDF format [3 marks]
- (e) Describe **FOUR** SPSS features that are relevant to researchers in social sciences [4 Marks]
- (f) Explain how secondary storage such as a hard disk complements the main memory of the computer [3 marks]

SECTION B-ANSWER ANY TWO QUESTIONS FROM THIS SECTION

QUESTION TWO [15 MARKS]

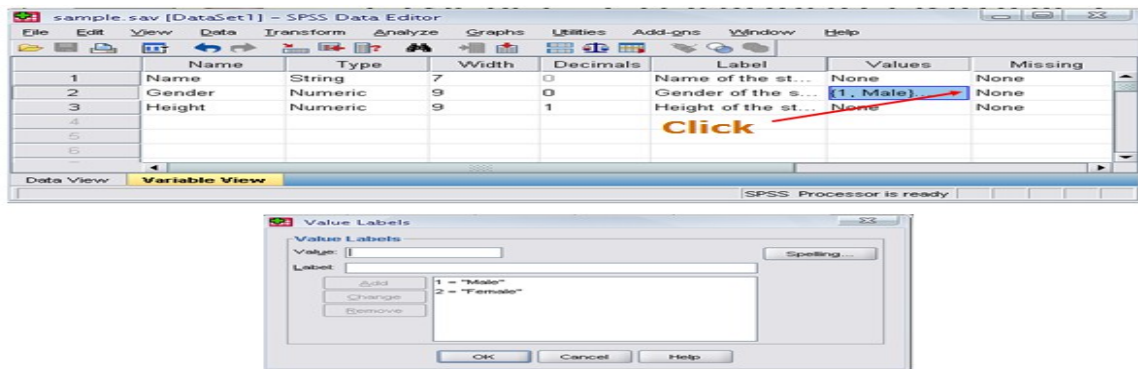
Below is a screenshot of a SPSS data editor. Use it to answer the questions that follow:



(a) Differentiate the role played by **data view** from that played by **variable view** [4 Marks]

(b) What is the most appropriate scale for Name, gender and height respectively [6 Marks]

(c) Show how the coding (value labels) of variable **Gender** may appear in the values field of variable view [5 Marks]



QUESTION THREE [15 MARKS]

(b) Use the spreadsheet and data below to answer questions that follow:

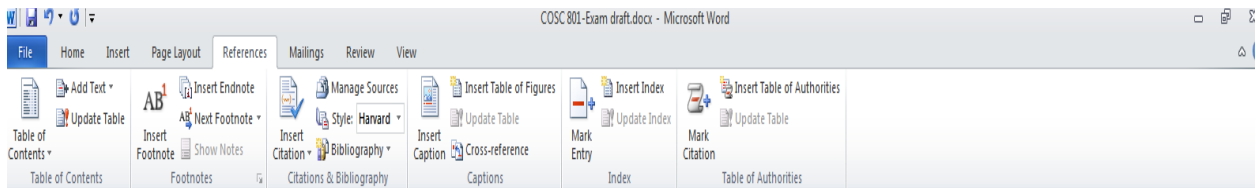
	A	B	C	D	E	F	G	H
1	Month	Nairobi	Kisumu	Mombasa	Total sales	Average Sale	Tax charged on Total sales (V.A.T)	Net sales
2								
3	January	120000	87000	97000				
4	February	80000	70000	60000				
5	March	78000	56000	45000				
6	April	90000	28000	56000				
7	May	50000	45000	78000				
8	June	79000	28000	65000				
9	July	78000	23000	67000				
10	August	67000	45000	56000				
11	September	67500	43000	56700				
12	October	89000	31000	45000				
13	November	45000	42000	54000				
14	December	67000	28000	45000				
15	Yearly sales							

(i)What formulae would you enter in cell B15,E3,F3,G3,H3 and copy it to compute yearly sales, Total sales, average sales, V.A.T and Net sales respectively [10 Marks]

(ii)Which two ms-excel functions are applicable for use in the spreadsheet above [5 marks]

QUESTION FOUR [15 MARKS]

(a)The screen below shows an extract of a ms-word user interface. Describe the role played by the following interface features [10 Marks]



- i) Manage Sources
- ii) Insert Table of figures
- iii) Update table
- iv) Insert Citation

v) Bibliography

(b) Describe a **FOUR** step procedure of creating a PowerPoint presentation [5 marks]

QUESTION FIVE [15 MARKS]

(a) With a well labeled diagram, discuss the various components that make up the computer system [10 Marks]

(b) While working on the computer, Sally downloaded a picture from an artist's online album and put it on her report. However Sally did not include a written acknowledgement in her references. What term is used to define this behaviour [2 Marks]

(c) Caleb has been selected as team leader of a group project in which the team will complete a presentation. Caleb decides to create and share a master slide with his team. What is the *main* benefit of using a master slide [3 Marks]
